



IBE

International Bureau for Epilepsy

ANNUAL REPORT 2011

**Shining a light on epilepsy
for 50 years**





IBE exists to improve the social condition and quality of life
of all people with epilepsy and those who care for them

Contents

Financial Report	4
A Year of Achievements	8
Contact Directory	14



The International Bureau for Epilepsy is a non-governmental organisation (NGO) in Special Consultative Status on the Economic and Social Council of the United Nations (ECOSOC).

The International Bureau for Epilepsy is in official working relations with the World Health Organization (WHO).

PRESIDENT'S REPORT



The past year has been a very busy year for the IBE, a year of great celebration and, despite the global recession, one in which tremendous achievements in the cause of epilepsy were made.

A long term ambition of the IBE has been to hold a European Epilepsy Day (EED) and on Tuesday 15th February this goal was realised when the first EED was launched in the European Parliament in Strasbourg. It was with great pleasure that I welcomed representatives from IBE member associations in 20 European countries to this auspicious occasion. IBE members were afforded the opportunity to meet with their national MEPs in a series of private meetings to raise issues of national concern. Nico Moshé, ILAE President and I held meetings with two key Commissioners, John Dalli, Commissioner for Health and Public Policy and Máire Geoghegan-Quinn, Commissioner for Research, Innovation and Science. A lunch discussion, hosted by Gay Mitchell, MEP, heard from a series of speakers about their experiences of epilepsy. An evening reception to open the excellent poster exhibition “*The Many Faces of Epilepsy*” was opened by EU Vice President, Edward McMillan-Scott.

Following the success of EED 2011, a European Advocates for Epilepsy working group of MEPs interested in epilepsy was created. In April, Mr Gay Mitchell MEP, President of the group submitted an EU Written Declaration to the parliament. The declaration called on the EU Commission to improve research and awareness of epilepsy in Europe. During the following months IBE member associations and ILAE chapters in EU countries worked tirelessly to get MEP signatures. On the 15th September, the European Declaration on Epilepsy was passed. The total number of signatures obtained was 459, which was 90 more than required, making it the third highest number of signatures of all disease related declarations since 2004.

In 2011, the IBE Promising Strategies Program welcomed projects in India, Tibet-China, Zimbabwe, Lithuania, Haiti, Swaziland, China, Nepal, Ecuador, Colombia and the Western

Pacific Islands. This program has been one of the most successful of all IBE's initiatives with 50 projects in 33 countries supported in order to improve the quality of life of people with epilepsy at national and regional levels.

On my own behalf, and on behalf of my predecessors, it was an honour to welcome IBE members to our Golden Jubilee celebrations, during the 29th International Epilepsy Congress in Rome, the city in which the IBE was founded in 1961. To mark this event an IBE history booklet “*50 Years Focused on Epilepsy*” was launched and remains available from www.ibe-epilepsy.org for download. The Ambassador for Epilepsy Award was given pride of place at a special event to honour all those who have received the award since it was first introduced in 1968. The top 60 images from the *Epilepsy Without Words* IBE Jubilee Photography completion were prominently displayed with the winning four images available to delegates as postcards. A major highlight of the celebrations was the Presidential Symposium on the theme “*Avoiding epilepsy deaths*” a subject which has been one of the enduring passions of my work with IBE. The session was chaired by Nico Moshé, ILAE President and I in a hall packed to capacity. The symposium was opened with a presentation by Mrs Susan Axelrod, a parent of child with difficult epilepsy and other speakers were world experts in SUDEP. I would like to thank them all for their excellent contributions.

At the 51st Assembly of the Pan American Health Organisation (PAHO) on the 29th September the Strategic Plan for Epilepsy in the Americas was approved. As a result of this approval epilepsy will now become a priority in the National Health Plan of every single nation in the PAHO region for the next 10 years. This has been on the goals of the Global Campaign Against Epilepsy (GCAE) Task Force and I would like to thank them for their tenaciousness in achieving their goal.

On the 29th November, a Roundtable event was jointly organised by the European Advocates for Epilepsy group and the IBE/ILAE Joint Task Force - Epilepsy Advocacy Europe - in the European Parliament in Brussels. Three athletes spoke passionately about their participation in sport at an international level and their epilepsy. The event was hosted by Mrs Angelika Werthmann, MEP, on behalf of the European Advocates for Epilepsy group.

It would not be possible to achieve any of these projects without the help and support of my fellow members on the International Executive Committee, members of the Regional Committees, IBE member associations, and our friends in the International League Against Epilepsy. Collectively we can raise awareness, reduce stigma and champion the cause of epilepsy in order to improve the lives of people with epilepsy on a global scale.

With best wishes to all

Mike Glynn
President

FINANCIAL REPORT

Income and Expenditure Account

Year ended 31st December 2011

With comparative totals for 2010

	2011 US\$	2010 US\$
INCOME	2,574,239	1,359,254
EXPENDITURE	(1,597,933)	(1,305,711)
OPERATING (DEFICIT)/SURPLUS FOR YEAR	<u>976,306</u>	<u>53,543</u>

Balance Sheet

Year ended 31st December 2011

With comparative totals for 2010

	2011 US\$	2010 US\$
FIXED ASSETS		
Tangible assets	<u>-</u>	<u>1,772</u>
CURRENT ASSETS		
Debtors and prepayments	173,159	172,009
Cash in hand and at bank	3,540,934	2,585,403
Amount held on behalf of the IBE/ILAE Joint Task Force	310,699	454,137
	<u>4,024,792</u>	<u>3,211,549</u>
CREDITORS (Amounts falling due in one year)	(910,455)	(1,075,290)
NET CURRENT ASSETS	<u>3,114,337</u>	<u>2,136,259</u>
NET ASSETS	<u>3,114,337</u>	<u>2,138,031</u>
CAPITAL AND RESERVES		
General Reserve	3,044,534	2,085,505
Restricted and designated fund	69,803	52,526
	<u>3,114,337</u>	<u>2,138,031</u>

Statement of Income and Expenditure

Year ended 31st December 2011

With comparative totals for 2010

	2011 US\$	2010 US\$
INCOME		
Congress income received	1,488,131	1,116,985
Congress income receivable	670,766	-
Corporate donations	204,284	141,192
IBE/ILAE JTF management fee	39,076	-
IBE/ILAE JTF reimbursement of expenses (IBE 50%)	75,695	15,983
Membership dues and solidarity fund	21,136	17,451
Investment income	52,887	44,616
Other grants	20,386	22,616
Miscellaneous income	1,878	411
	<u>2,574,239</u>	<u>1,359,254</u>
EXPENDITURE		
Congress expenditure	1,008,964	641,552
Office expenses	19,248	16,141
Printing and postage	13,790	18,398
Printing and postage - International Epilepsy News	29,755	29,170
Travel	27,530	49,151
Global Campaign costs	43,580	28,040
Accountancy fees	10,626	16,698
Audit fees	7,000	7,000
Administrator costs	166,734	144,520
Bank charges	595	760
Rent	30,514	27,970
Promising Strategies	45,811	52,525
Website costs	3,943	-
IBE JTF expenditure	75,695	15,983
EPICURE costs	20,386	22,616
Depreciation	1,772	4,017
Marketing	62,595	13,036
	<u>1,568,538</u>	<u>1,087,577</u>
Loss of foreign exchange	29,395	218,134
	<u>1,597,933</u>	<u>1,305,711</u>

FINANCIAL REPORT continued

NOTES TO THE FINANCIAL STATEMENTS FOR THE YEAR ENDED 31 DECEMBER 2011

IBE/ILAE Joint Task Force

The IBE/ILAE Joint Task Force programme, formerly known as the EUCARE programme, is a joint 50:50 initiative of the International Bureau for Epilepsy (IBE) and the International League Against Epilepsy (ILAE). Its aim is to raise the profile of epilepsy across Europe by undertaking new research and educational activities. The initiative received corporate sponsorship and the fund is jointly owned by IBE and ILAE. IBE administer the programme and the fund, and received a management fee of US\$39,076 for 2010 and 2011.

	2011 US\$	2010 US\$
Opening balance	454,137	486,103
Bank interest received	7,952	7,358
Expenditure incurred	(151,390)	(39,324)
Closing balance	<u>310,699</u>	<u>454,137</u>

Congress Financial Information

The International Bureau for Epilepsy and the International League Against Epilepsy (ILAE) engages the services of a contracted International Director of Meetings (IDM) under the terms of an Agreement dated 2 February 2010. The IDM is charged with the organisation of various European and International Congresses.

The 2011 financial statements reflect the portion of assets, liabilities, net revenues and expenses held by the International Director of Meetings on behalf of the International Bureau for Epilepsy. An analysis of the proportion of congress assets, liabilities, income and expenses applicable to the Bureau is as follows:

	2011 US\$	2010 US\$
Cash at bank	343,946	344,832
Debtors and prepayments	155,928	161,206
Creditors	(110,222)	(102,771)
Deferred income	(1,011,214)	(378,702)
IDM-Congress income received	1,488,131	1,116,985
IDM-Congress income receivable	670,766	-
IDM-Congress expenses	<u>(1,008,964)</u>	<u>(641,552)</u>

Solidarity Fund Donations

2011

IBE acknowledges the very generous support of the members listed below, whose donations to the Solidarity Fund in 2011 helped to meet the membership dues of members in emerging nations, who might, otherwise, have been unable to meet their dues payments.

US\$3,000

Epilepsy Foundation of America, USA

US\$2,000

Epilepsy Hospital Bethel, Japan

US\$1,500

Swedish Epilepsy Association, Sweden

US\$500

Epilepsy New Zealand (ENZ)

US\$200

Indian Epilepsy Association, India

US\$150

Canadian Epilepsy Association, Canada

ANLICHE, Chile

Swiss Epilepsy Centre, Switzerland

US\$100

Epilepsy Action, Australia

Epilepsy Queensland, Australia

Epilepsy Australia, Australia

JECA, Australia

CAAE, China

Caritas Malta Epilepsy Association, Malta

Epilepsy Vereniging Nederland, The Netherlands

Stichting Kempenhaeghe, The Netherlands

Epilepsy Connections, Scotland

AEAE, Spain

Under US\$100

Slovenian League Against Epilepsy, Slovenia

ParEpi, Switzerland

Cyprus Association for People with Epilepsy

Japan Epilepsy Association, Japan

Korean Epilepsy Association, Korea

Taiwan Epilepsy Association, Taiwan

Epilepsy & Environment, Georgia

Members supported by the Solidarity Fund

- | | | | |
|-----------------------|---|--------------------------|---|
| 1. ALBANIA: | Albanian Association of Epilepsy | 11. NEPAL: | Nepal Epilepsy Association |
| 2. BANGLADESH: | Bangladesh Epilepsy Association | 12. NIGER: | LNCEMNMC, Service de Psychiatrie |
| 3. CAMEROON: | Association Camerounaise Contre L'Epilepsie | 13. NIGERIA: | Epilepsy Association of Nigeria |
| 4. CAMEROON: | Community Development and Epilepsy Foundation | 14. PAKISTAN: | FLAME |
| 5. CONGO: | MHCD Centre for prevention and treatment of Epilepsy | 15. SENEGAL: | Ligue Senegalaise contre l'Epilepsie |
| 6. ETHIOPIA: | Epilepsy Support Association | 16. SIERRA LEONE: | Epilepsy Association of Sierra Leone |
| 7. GAMBIA: | Gambia Epilepsy Association | 17. SWAZILAND: | Swaziland Epilepsy association |
| 8. GHANA: | Ghana Epilepsy Association | 18. TANZANIA: | Parents Organisation for Children with Epilepsy |
| 9. KENYA: | Kenya Association for the Welfare of People with Epilepsy | 19. TOGO: | Association Clinique de l'Epilepsie |
| 10. MONGOLIA: | Mongolian Epilepsy Association | 20. UGANDA: | Epilepsy Support Association |
| | | 21. ZAMBIA: | Epilepsy Association of Zambia |
| | | 22. ZIMBABWE: | Epilepsy Support Foundation |

CORPORATE SPONSORING PARTNERS

IBE acknowledges the support of its sponsoring partners, whose funding to the Bureau in 2011 enabled the organisation to maintain its services and to introduce a number of new innovative initiatives to improve the quality of life of persons with epilepsy, their families and their carers.

Gold Partner

- Dainippon Sumitomo Pharma Co., Ltd

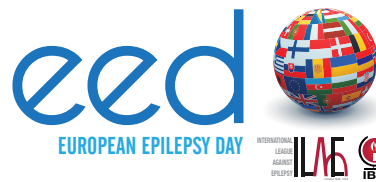
Other Partners

- Cyberonics

Silver Partners

- Eisai Europe Ltd
- GlaxoSmithKline
- UCB Pharma

A year of tremendous achievements



With the theme *The Many Faces of Epilepsy*, the first European Epilepsy Day (EED) was launched in the European Parliament in Strasbourg, on Tuesday 15th February, and was the first highlight of what was to be a very busy and exciting year for IBE. Representatives from IBE member associations in 20 European countries travelled to Strasbourg to be part of this momentous occasion.

Hosted by Gay Mitchell MEP, a Lunch Discussion and a Reception to open the Many Faces of Epilepsy poster exhibition were attended by a total of 56 MEPs.

Of special importance were private meetings with Mrs Maire Geoghegan-Quinn, Commissioner for Research, Innovation and Science, and Mr John Dalli, Commissioner for Health and Consumer Policy.

Across Europe, at national level, epilepsy associations organised awareness raising events to celebrate the day, using the newly created EED logo.



Almost immediately following EED 2011, Gay Mitchell MEP created the *European Advocates for Epilepsy* - a working group of MEPs with a special interest in epilepsy.

At its first meeting, the group took the decision to submit a *Written Declaration on Epilepsy* to the parliament. The declaration called on the EU Commission to improve research and awareness in epilepsy in Europe. To be successful, a declaration must attract the signatures of a majority of MEPs and there is also a time limit of three months, after which time a declaration lapses.

IBE and ILAE associations in Europe played a very important role in a concerted effort to have the declaration approved.

On the 15th September 2011, *European Declaration 22-2011 on Epilepsy*, was carried with the signatures of 459 MEPs, which was 90 more than the 369 required to achieve a majority!

IBE-ILAE JOINT TASK FORCE IN EUROPE

Epilepsy
Advocacy
Europe



In March 2011 the newly created IBE-ILAE Joint Task Force met, for the first time, to lay down plans and objectives and to set its agenda for future activities. This was a significant development and facilitates joint IBE/ILAE activities in Europe for the first time in many years.

The Joint Task Force will serve as the political and advocacy arm of the IBE Regional Committee and the ILAE Commission on European Affairs, and its membership comprises four representatives each from IBE and ILAE.

The group is co-chaired by Mike Glynn, for IBE, and Emilio Perucca, for ILAE, and is working closely with the European Advocates for Epilepsy special MEP group.

During 2011 the Task Force was responsible for directing efforts to the successful passing of the European Written Declaration



on Epilepsy and early arrangements for EED 2012.

The task force also arranged, with the Advocates for Epilepsy Group, a special Workshop on Epilepsy & Sport in the EU Parliament in Brussels.



EPILEPSY AND SPORT

In November, a Roundtable event was organised jointly by the IBE-ILAE Joint Task Force and the European Advocates for Epilepsy group. The main speakers, who spoke with passion and eloquence, were people with epilepsy who have sporting talents. Emma Beamish, Ireland (pictured second from right) is an Irish International cricketer, who represented Ireland at the 2005 Cricket World Cup in South Africa.

Jérôme Becher, Germany (third from right) holds the Guinness world record for the longest uninterrupted swim (80km) as well as the European record in 24-hour swimming.

Georg Thoma, Germany (back row) is a marathon runner, who has even run a marathon along the Great Wall of China. He undertakes distance races for charity, including a 630km charity run across Germany.

The event was hosted in the European Parliament in Brussels by Mrs Angelika Werthmann, MEP, on behalf of the European Advocates for Epilepsy group.

Also included in the picture above are (far left) Asla Pitkänen and (far right) Mike Glynn, both members of the Joint Task Force, and Gay Mitchell MEP (pink tie).

Planning for a brighter future

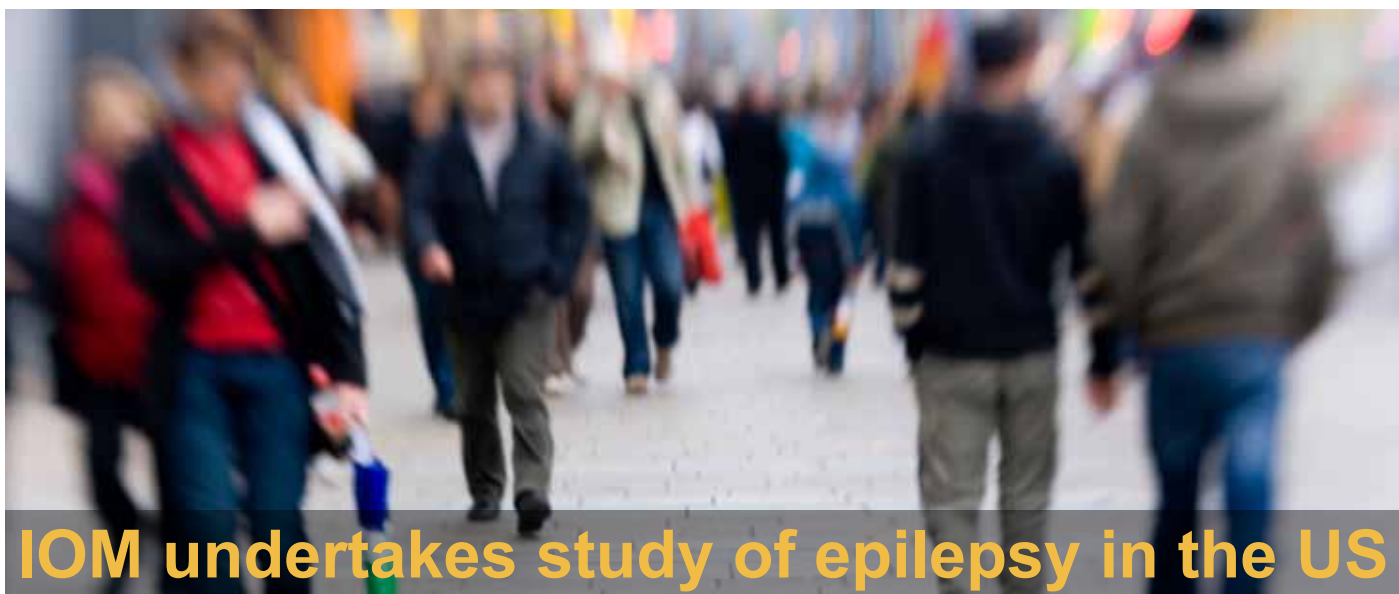


A STRATEGIC PLAN FOR EPILEPSY IN THE AMERICAS

Following original discussions at the Latin American Epilepsy Congress in Cartagena, Colombia in August 2010, there was a major drive during 2011 to create a Strategic Plan for Epilepsy for the Americas.

The significance of such a plan could not be underestimated since, if approved by the Pan American Health Organization (PAHO), it would result in epilepsy being a priority in the National Health Plan of every single nation in the PAHO region for the following 10 years. This would be the first time that this would be achieved in the 100 years of PAHO's existence and would be significant for the future care and treatment of people with epilepsy and for their quality of life.

Thanks to sustained hard work and with the tremendous support of Dr Jorge Rodríguez, PAHO Regional Mental Health Advisor, the dream became a reality with the approval of the Strategic Plan for Epilepsy by PAHO at the 51st Assembly of the Pan American Health Organization in Washington DC on 29th September 2011.



IOM undertakes study of epilepsy in the US

Throughout 2011, the Institute of Medicine (IOM) in the US was working on a new study on epilepsy in the United States. The IOM had been asked to examine the public health dimensions of the epilepsies, focussing on public health surveillance and data collection; population and public health research; health policy,

healthcare and human services; and education for people with epilepsy and their families, health care providers, and the public. Epilepsy groups working closely with the IOM included Epilepsy Foundation of America, IBE's Full Member in the US, and the International League Against Epilepsy.



STRATEGIES FULL OF PROMISE FOR A BRIGHTER FUTURE



2011 saw the fifth round of the annual Promising Strategies Program, which is one of IBE's most successful initiatives to date. A Promising Strategy is one that has the potential to foster effective and innovative public health practice with regard to epilepsy.

Set up in 2006, as a means of supporting members through the provision of financial support for projects aimed at improving the quality of life of people with epilepsy, by the end of 2011 IBE had provided support to 50 projects in 33 countries, with a total of US\$250,000 of funding allocated.

Eleven new initiatives were selected to receive funds in 2011:

Swaziland: Poultry rearing enterprise to provide training and employment for people with epilepsy

Zimbabwe: An innovative lobbying and advocacy programme where people with epilepsy speak and write about the challenges and successes in their lives

China: Caring for the carers project, to improve quality of life of those who care for people with epilepsy

Nepal: Production of 'A new life for Juneli' a docudrama film to educate people on the importance of seeking appropriate treatment for epilepsy

Ecuador: Neuropsychomotricity training - a modern inter-disciplinary science that provides guidelines for harmonious development of the individual

Colombia: Home Clinic - a project that helps people with epilepsy and their families through the provision of life skills for a more independent life

Western Pacific Islands: Survey on the prevalence of epilepsy, services available and the treatment gap, with the ultimate aim of creating a self sufficient epilepsy association in each island nation

India: Training in baking skills to assist people with epilepsy to find employment

Tibet: Awareness programme targeting Tibetans living in remote regions of the country

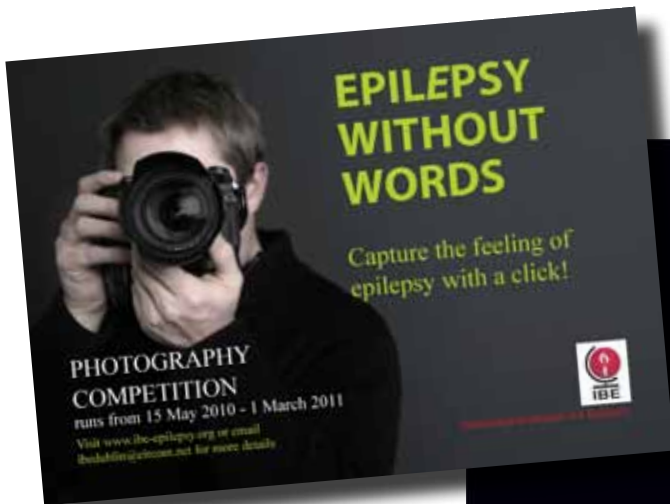
Lithuania: Survey of national legislation in the area of disability, in light of the UN Convention, in order to evaluate existing legislation and to make recommendations for change

Haiti: Summer Soccer Camp for children with epilepsy, who are often excluded from sports.



IBE's Golden Jubilee

JUBILEE PHOTOGRAPHY COMPETITION



With a prize fund of US\$7,000, more than 300 entries were received from all over the world for the IBE Jubilee Photography competition. The top 60 images were exhibited at the International Epilepsy Congress in Rome, with the winning four images available to delegates as souvenir postcards.

Joint 3rd Prize
Title: Look
Photographer: Kai Löffelbein, Germany



ILAE Jubilee Fund to support Promising Strategies



IBE acknowledges with thanks the gift of US\$20,000, spread over four years, which was presented to the Bureau by the ILAE, to support the further development each year of one already successful Promising Strategies project. This gift recognises the significant impact that the Promising Strategies Program has had, in supporting IBE members associations in the creation of innovative initiatives to benefit people with epilepsy and their families, since its creation in 2006.

A TOAST TO IBE!

Every birthday deserves a special cake and for IBE's 50th birthday, there was no exception. The General Assembly in Rome on 1st September closed with delegates enjoying a slice of an enormous birthday cake, decorated with the Jubilee logo, washed down with a glass of Italian prosecco.

It was fitting that the celebration took place in the city where IBE was founded 50 years earlier in 1961!

Celebrating 50 years of achievement

Honouring Ambassadors for Epilepsy



Introduced by then IBE President, Mrs Ellen Grass, in 1967, the Ambassador for Epilepsy award has, to date, been bestowed on almost 300 individuals. To highlight the tremendous contribution

which they have made to the field of epilepsy, both medical and social, IBE organised a Gala Dinner in Rome, at which a special souvenir badge was presented to each Ambassador who attended.

A nice surprise at the Opening Ceremony of the 29th International Epilepsy Congress was the presentation of a commemorative scroll, by ILAE President Nico Moshé to IBE President Mike Glynn, to mark IBE's Golden Jubilee. The framed hand-calligraphied scroll now hangs pride of place in the IBE office - *photo right*.

A special IE News Jubilee Award, with a prize of up to \$2,000 to cover attendance at a future IBE congress, ran throughout 2011. The winning article, the *D-side of Epilepsy*, submitted by Paula T Fernandes from Brazil (who co-wrote the piece with Li Min Li), was published in Issue 4-2011 of International Epilepsy News.



CONTACT DIRECTORY



Offices, Committees, Task Forces and Networks

IBE HEAD OFFICE

Ann Little,
IBE Executive Director,
11 Priory Hall,
Stillorgan Road, Blackrock,
Co Dublin,
Ireland.
T: +353 1 210 8850
ibeexecdir@eircom.net
www.ibe-epilepsy.org

CONGRESS OFFICE

IBE/ILAE Congress Secretariat
7 Priory Hall,
Stillorgan Road, Blackrock,
Co Dublin,
Ireland.
T: +353 1 205 6720
info@epilepsycongress.org
www.epilepsycongress.org

INTERNATIONAL EXECUTIVE COMMITTEE

President

Mike Glynn
mikeglynn@epilepsy.ie

Secretary General

Carlos Acevedo
carlosoacevedo@yahoo.com

Treasurer

Grace Tan
gracetan@epilepsy.com.sg

Immediate Past President

Susanne Lund
Susanne.Lund@epilepsi.se

Vice Presidents

Africa

Anthony Zimba
anthonymzmb@gmail.com

Eastern Mediterranean

Abdulaziz Alsemari
alsemari@kfsshr.edu.sa

Europe

Janet Mifsud
janet.mifsud@um.edu.mt

Latin America

Lilia Núñez Orozco
lilianuor@yahoo.com

North America

Mary Secco
ed@epilepsysupport.ca

South East Asia

Vinod Saxena
drvssaxena@gmail.com

Western Pacific

Shung-lon Lai
shunglon@mail.nsysu.edu.tw

ILAE Representatives

Nico Moshé, President
Sam Wiebe, Secretary General
Emilio Perucca, Treasurer

NETWORKS

Editors Network

Chair: Robert Cole
rcole@epilepsycentre.org.au

CEO Network

Contact: Ann Little
ibeexecdir@eircom.net

REGIONAL COMMITTEES

Africa

Chair: Anthony Zimba
anthonymzmb@gmail.com

Eastern Mediterranean

Chair: Najib Kissani
najibkis@gmail.com

Europe

Chair: Athanasios Covanis
acovanis@otenet.gr

Latin America

Chair: Lilia Núñez Orozco
lilianuor@yahoo.com

North America

Contact: Mary Secco
ed@epilepsysupport.ca

South East Asia

Chair: HV Srinivas
hvsrinivas@gmail.com

Western Pacific

Chair: Robert Cole
rcole@epilepsycentre.org.au

TASK FORCES

Elections

Chair: Susanne Lund
Susanne.Lund@epilepsi.se
Members: Mike Hills, Pete Engel

Epilepsy & Driving

Contact: Mike Glynn
mikeglynn@epilepsy.ie
Members: Eric Schmedding,
Marshal Mo-Song Hsieh, Silvia
Kochen, Andrew Pan

Research Task Force

Contact: Rosey Panelli
roseyjune@gmail.com
Members: Ley Sander, Janet Mifsud,
Tomás Mesa, Li Li Min, Malachy
Bishop, Ding Ding, Patrick Kwan

Governance

Chair: Johan Falk-Pedersen
johan.falk-pedersen@sverdruplaw.no
Members: Susanne Lund, Grace
Tan, Sandy Finucane, Christopher
Morris-Cooles

JOINT IBE/ILAE INITIATIVES

Global Campaign

Mike Glynn, Co-chair
Global Campaign Against Epilepsy,
mikeglynn@epilepsy.ie
www.GlobalCampaignAgainst-
Epilepsy.org

IBE-ILAE Joint Task Force in Europe

Administration: Ann Little
ibeexecdir@eircom.net
Co-chairs: Mike Glynn, Emilio
Perucca
Members: Asla Pitkänen, Hanneke
de Boer, Reetta Kälviäinen, Janet
Mifsud, Michel Baulac, Christian
Elger

IE NEWS EDITOR

Editor: Carlos Acevedo
carlosoacevedo@yahoo.com
Co-ordinator: Ann Little
ibeexecdir@eircom.net

Full and Associate Members - Listed by Region

AFRICA

CAMEROON

Association Camerounaise contre
L'Epilepsie
S/C Coordination Diocésaine de
la Santé
BP 70 Bafia,
Cameroon.
T: +23774333375
santbafia@yahoo.fr
Contact: Sr. Marie Christine Long.

Associate Member:

Community Development and
Epilepsy Foundation (CODEF)
Box 22 Bali Nyonga,
c/o Mr Godwin Che, Box 2082,
Bamenda,
North West Region,
Cameroon.
T: +237 75 07 44 42
E: codefcameroon2002@gmail.com
Contact: Mr Nsom Kenneth Ninying.

CONGO, DR - Associate Member

MHCD Centre for the Preven-
tion and Treatment of Epilepsy
Luvungi Naturopathic Hospital,
Luvungi/Uvira, DR Congo.
T: +243 994 931 840
E: moulymasu@yahoo.fr or
moulymasu@gmail.com
Contact: Dr Luc Mulimbalimba-
Masururu.
http://www.mhcdafrika.org/

ETHIOPIA

Epilepsy Support Association of
Ethiopia
PO Box 25516,
Code 1000,
Addis Ababa,
Ethiopia.
T: +251 1553617,
E: dr.zenebe.gedlie@ethionet.et
Contact: Dr Zenebe Damtie.

GAMBIA

Gambia Epilepsy Association
PO Box 132, Banjul, The Gambia.
T: +220 9955 414
E: gambiaepilepsy@yahoo.co.uk
Contact: Mrs Rita Harding.

GHANA

Ghana Epilepsy Association
c/o Box M230, Accra, Ghana.
T: +233 2166 5421 ext 4420
ayisu@hotmail.com
Contact: Mr Paul Ayisu.
Alternate: Mr Leonard Agbley
PO Box SD 233, Stadium, Accra,
E: agbleleo@yahoo.com.

KENYA

Kenya Association for the Welfare of People with Epilepsy (KAWE)
PO Box 60790 00200,
Mbaazi Avenue - Lavington,
Nairobi, Kenya.
T: +254 020 387 0885
Mobile :+254 0721 742 558
E: info@kawe-kenya.org or
Rosemary@kawe-kenya.org
Contact: Mrs Rosemary Gathara.

MAURITIUS

EDYCS Epilepsy Group, Mauritius
442 State Land, Boulevard Rivaltz,
Port Louis, Mauritius.
T: +230 213 1733,
E: edycs.org@intnet.mu
Contact: Mr Y Noormamode.
http://edycsepilepsy.intnet.mu

NAMIBIA

Epilepsy Namibia
PO Box 11822, Klein Windhoek,
Namibia.
T: +264 813 226834
E: namep@epilepsynamibia.org
Contact: Ms H Riphagen.

NIGER

LNCEMNMC
Service de Psychiatrie,
Hôpital National de Naimey,
BP238 Niamey,
Niger.
T: +227 72 24 42
E: djibo.doumaiga@gmail.com
Contact: Dr D Douma.

NIGERIA

Epilepsy Association of Nigeria
No 2 Weeks Road by 84 Asa Road,
Aba, Abia State,
Nigeria.
T: +234 708 1832837
drmohaniclinic@yahoo.com
Contact: Dr SE Nwakwue.

SENEGAL

Ligue Senegalaise contre l'Epilepsie,
Clinique Neurologique,
Centre Hospitalo-Universitaire de
Fann, BP 5035,
Dakar-Fann,
Senegal.
T: + 221338 253678
E: agalodiop@gmail.com
Contact: Prof Amadou Gallo Diop.

SIERRA LEONE

Epilepsy Association of Sierra Leone
8 Mansaray Street,
PO Box 381,
Freetown,
Sierra Leone.
E: durodamil@yahoo.co.uk
Contact: Dr Radcliffe D Lisk.

SOUTH AFRICA

Epilepsy South Africa
PO Box 12100 N1 City,
7463, Cape Town,
South Africa.
T: +27215954900
E: nationaldirector.no@epilepsy.org.za
Contact: Ms Marina Clarke.
www.epilepsy.org.za

SWAZILAND

Swaziland Epilepsy Association
PO Box 7220 Mbabane H100,
Swaziland.
T: +268 4047028
E: admin@epilepsy.org.sz
Contact: Mr Mbuso Mahlalela.

TANZANIA, UNITED REPUBLIC OF

Parents Organisation for Children with Epilepsy (POCET)
PO Box 65293,
Dar Es Salaam,
Tanzania.
T: +255 754 822 517
E: basamwene1@yahoo.com
Contact: Mrs Aisia Matowo Mrema.

TOGO Associate Member:

Association Clinique de l'Epilepsie
155, Carrefour de Rio, 11 BP 75,
Lomé, Togo.
T: +228 22403018
E: kokousodj@yahoo.com
Contact: Dr Kokou Sodjehoun.

UGANDA

Epilepsy Support Association Uganda (ESAU)
Plot 695 Gombe B Off Kayunga-
Kinoni-Wakiso Rd, Wakiso Town
Council, PO Box 16260
Wandegeya, Kampala, Uganda.
T: +256 772 450 383
Private: +256 774 077 589
E: mugarura2012@gmail.com
Contact: Mr A Mugarura.
www.epilepsy.org.ug

ZAMBIA

Epilepsy Association of Zambia
Amanda Ethu Building,
Kalundwe Road,
PO Box 32443, Lusaka, Zambia.
T: +260 977 789042
E: eazepilepsy@hotmail.com
Contact: Ms Betty B Nsachilwa.

ZIMBABWE

Epilepsy Support Foundation
43 St David Road, Hatfield,
Harare, Zimbabwe.
T: +2 634 571 225
E: jmuuu@yahoo.co.uk
Contact: Mrs Sigudu.
www.epilepsyzimbabwe.co.zw.

EASTERN MEDITERRANEAN

EGYPT

Egyptian Epilepsy Association
40 Safeya Zaghlol Street,
Alexandria 21111,
Egypt.
T: +203 303 3338
E: hassanhosny@link.net
Contact: Dr Hassan Hosny.

IRAN

Iranian Epilepsy Association
No 1352, Resalat Exp, Tehran.
Iran.
T: +982 188 463271
E: iranepi@gmail.com
Contact: Dr Gharagozli.

LEBANON

Association of Care of People with Epilepsy
Hobaika Bldg, 1st Floor,
Qayaa'al Wosta, Saida, Lebanon.
T: +961 3 388713 or 961 7 731383
E: epilepsyl@hotmail.com
Contact: Mrs Manar Sawwan.

MOROCCO

Association Marocaine contre l'Epilepsie
BP 7010 Sidi Abbad,
40080 Marrakech, Morocco.
T: +212 663 081 035
E: najibkis@gmail.com
Contact: Prof Najib Kissani.

PAKISTAN

FLAME
83 Shah Jamal Colony, Lahore,
Pakistan.
T: +92 4275 81724
E: pprc@wol.net.pk
Contact: Dr. Afzal Javed.

SAUDI ARABIA

Epilepsy Support and Information Centre
PO Box 3354, MBC 76,
Riyadh, 11211,
Saudi Arabia.
T: +966 1552 4755
E: alsemari@kfsshr.edu.sa
Contact: Dr A Alsemari.

TUNISIA

Tunisian Epilepsy Association
Child Neurology Department,
EPS Hedi Chaker 3029 Sfax,
Tunisia.
T: +21 674 242 564
E: chahnez@gnet.tn
Contact: Dr Chahnez Triki.

EUROPE

ALBANIA

Albanian Association of Epilepsy
Dibra St #372,
Tirana,
Albania.
T: +355 4 234 5219
E: jkruja@gmail.com or
epiabania@live.com
Contact: Dr Jera Kruja.

AUSTRIA

Epilepsie Dachverband Österreich (EDO)
Wichtelgasse 55/17-20,
1170 Wien,
Austria.
T: +431 4895278
Mobile: +43 664 1254788
E: office@epilepsie.at
Contact: Mrs L. Grössing Soldan
www.epilepsie.at

BELGIUM

Les Amis de la Ligue Nationale Belge contre l'Epilepsie
Dr Vrienden van de Belgische
Liga tegen Epilepsie,
Bernard Spaelaan 141,
9000 Gent,
Belgium.
T: +32 9 222 0404,
E: oostvlaanderen@epilepsieliga.com
Contact: Ms Claudine Van Daele.

BULGARIA

Association of Parents of Children with Epilepsy
Triadica district,
Strelbishte Bl 10, entr. G,
floor 7, ap 67,
Sofia 1408, Bulgaria.
T: +359 24 883 594
E: frde@abv.bg
Contact: Mrs Veska Sabeva.

CROATIA

Croatian Association for Epilepsy
General Hospital "Sveti Duh",
Sveti Duh 64,
10000 Zagreb, Croatia.
T: +38 513 712 143,
E: ivan.bielen@zg.htnet.hr
Contact: Dr Ivan Bielen.

CYPRUS

Cyprus Association of Support for People with Epilepsy
8 Epidavrou Str., Platy 2114,
Nicosia, Cyprus.
T: +357 9941 2779
E: antigoni@cytanet.com.cy
Contact: Mrs A Kallimachou.

CZECH REPUBLIC

Spolecnost "E"
Liskova 3, 4200, Prague 4,
Czech Republic.
T/F: +4202 4172 2136
E: info@spolecnost-e.cz
Contact: Mrs Alena Cervenkova
www.spolecnost-e.cz

Associate Members:

Epi-Rodina

Sobeslavska 2377/1,
130 00 Prague 3, Vinohrady,
Czech Republic
T: +420 777 873334/ 605 854769
E: ivan@er-sme.cz or blanka@er-sme.cz
Contact: Mr Ivan Holeccek, Ms
Blanka Hutova

EpiStop

Videnska 800, Praha 4, 14059,
Czech Republic.
T: +420 261 083 827
E: info@epistop.cz
Contact: Lucie Pomajslova.

DENMARK

Dansk Epilepsiforening
Store Gråbrødrestræde 10, 1.,
DK-5000 Odense C, Denmark.
T: +45 6611 9091
E: epilepsi@epilepsiforeningen.dk
Contact: Mr René Bogh-Larsen

Associate Member:

Danish Epilepsy Centre
Børneambulatoriet,
1 Epilepsihospitalet, Dr Sells vej 23,
4293 Dianalund, Denmark.
F: +45 5827 1471,
E: vst@filadelfia.dk
Contact: Mrs Vibeke Stubbings.

ESTONIA

Estonian Epilepsy Association
Puusepp St 2, 51014 Tartu
Estonia.
T: +372 7318515,
epilepsialiit@hotmail.ee
Contact: Dr Andreas Oun.

FINLAND

Epilepsialiitto
Malmin Kauppatie, 26,
FIN-00700 Helsinki,
Finland.
T: +358 93508230
E: epilepsialiitto@epilepsia.fi
Contact: Mrs Sari Tervonen.

FRANCE

Associate Members:
Epilepsie-France
133 rue Falguière, Bâtiment D,
75015 Paris, France.
T/F: +33 153 806 664
E: siege@epilepsie-france.fr
Contact: Mrs Laila Ahddar.

Handicapités

115 rue de l'Abbé Groult,
75015 Paris, France.
T: +33 614 498 571
E: contact@handi-capacites.eu
Contact: Mrs B Bonard Breack.

EOLE

240 Boulevard Voltaire,
75011 Paris, France.
T: +33 14371 6260,
E: eole-asso@wanadoo.fr
Contact: Dr Roger Salbreux.

GEORGIA

**Epilepsy & Environment
Association of Georgia**
Dept of Neurology,
Tbilisi State Medical University,
Jacob Nicoladze str. 6, apt 22,
380079 Tbilisi, Georgia.
T: +99 599 253 551
E: natelaokujava@yahoo.com
Contact: Dr Natela Okujava.

GERMANY

**Deutsche Epilepsievereinigung
e.V.**, Zillestrasse 102, D-10585
Berlin, Germany.
T: +49 30342 4414
E: info@epilepsie.sh
Contact: Ms Annemarie Söhnel.

Associate Member:

**Interessenvereinigung für Anfall-
skranke in Köln eV**
Hoeningner Weg 361,
D-50969 Köln, Germany.
T: +49 221 3605767
E: info@epilepsie-online.de
Contact: Mr Tomas Porschen.

GREECE

**Greek National Association
against Epilepsy**
Egiou 13, 11527, Goudi,
Athens, Greece.
T: +302107705785
E: graaepil@otenet.gr
Contact: Dr Athanasios Covanis.
epilepsy-greece.gr

HUNGARY

**Association for Future of People
with Epilepsy in Hungary**
Lenkey u.7, Budapest H-1184,
Hungary.
E: z.maya15@gmail.com
Contact: Marianna Imréné Zalavári

ICELAND

**LAUF The Icelandic Epilepsy
Association**
Hatun 10b, 105 Reykjavik, celand.
T: +354 551 4570
E: lauf@vortex.is
Contact: Mrs Frida Bragadottir
www.lauf.is

IRELAND

**Brainwave The Irish Epilepsy
Association**
249 Crumlin Road,
Dublin 12, Ireland.
T: +353 1455 7500
E: mikeglynn@epilepsy.ie or
pmurphy.brainwave@epilepsy.ie
Contact: Mr Mike Glynn or Mr
Peter Murphy
www.epilepsy.ie

ISRAEL

Israel Epilepsy Association
4 Avodat Yisrael, PO Box 1598,
Jerusalem 91014, Israel.
T: +97 2 5000283
E: epilepsy.il@gmail.com
Contact: Mr Y Unterman.

ITALY

**Associazione Italiana contro
l'Epilessia (AICE)**
Via T Marino 7, 20121 Milan,
Italy.
T: +39 02809 299
E: assaice@iperbole.bo.it
Contact: Dr Giovanni B Pesce.

LITHUANIA

**Lithuanian Society of People with
Epilepsy and their Sponsors**
Kaunas Medical University Hospital,
Dept of Microneurosurgery,
Eiveniu 2, LT-3007 Kaunas,
Lithuania.
T: +370 37 326 727
E: epilepsy.lsmu@gmail.com
Contact: Dr Arunas Kobakas.

Associate Member:

**Lithuanian Association for Inte-
gration of People with Epilepsy
- LESIA**
Saltoniskiu 29/3, Vilnius
LT-08105, Lithuania.
T: +370 52 760 067
E: epi@lesia.lt
Contact: Dr Danute Murauskaitė.
www.lesia.lt

MALTA

**Caritas Malta Epilepsy
Association**
7 Zenit Paul Borg Street,
Attard ATD 2633, Malta.
T: +356 27436442
E: zenit@onvol.net
Contact: Mrs Victoria Dimech.

MACEDONIA, FYR

Epilepsija Aura
Ohridska 2 Bitola, 7000,
FYR Macedonia.
T/F: +38 970 269 567
E: epilepsija_aura@yahoo.com
Contact: Mrs Ana Doneva

NETHERLANDS

**EVN Epilepsie Vereniging
Nederland**
Postbus 8105, 6710, AC Ede,
The Netherlands.
T: +31 318 672 772
E: info@epilepsievereniging.nl
Contact: Mr AWB Tempels

Associate Members:

**National Epilepsie Fonds/De
Macht van het Kleine**
Postbus 270, 3990 GB Houten,
The Netherlands.
T: +31 306 344 063,
E: boer@epilepsiefonds.nl
Contact: Mr Martin Boer.

SEIN

Postbus 540, 2130 AM,
Hoofddorp,
The Netherlands.
T: +31 235 588 412
E: hdboer@sein.nl
Contact: Mrs Hanneke de Boer.

Stichting Kempenhaeghe Sterk-
selseweg 65,
5591 VE Heeze,
Netherlands.
T: +31 40 227 9199
E: bomeri@kempenhaeghe.nl
Contact: Mr Nicolaas Bomer.

NORWAY

Norwegian Epilepsy Association
Karl Johans gate. 7, 0154 Oslo,
Norway.
T: +47 22476600
E: nef@epilepsi.no
Contact: Mr Henrik Peersen
www.epilepsi.no

POLAND

**Polish Association for People
Suffering from Epilepsy**
Ul Fabryczna 57,
15-482 Bialystok, Poland.
T/F: +48 8567 54420
E: zarebski@bialan.pl
Contact: Mr Tadeusz Zarebski.

PORTUGAL

Epi-Apfape (EPI)
Avenida Bissaya Barreto,
n.o 268 R/c A,
3000-075 Coimbra,
Portugal.
T/F: +239 482 865
E: epicoimbra@epilepsia.pt
Contact: Ms Ana Paula Pereira.

ROMANIA

EpiRomania
Str. Liviu Brebeanu nr 34,
Cluj-Napoca, cod 400446,
Romania.
T: +4 0264 599 500
E: office@epilepsie.ro
Contact: Mr Gelu Stanculescu.

RUSSIAN FEDERATION

All Russian Charity Foundation
Leningradskoye shosse 114-57,
Moscow 125445, Russia.
T/F: +79 161 421 898
E: mdoorfeeva@inbox.ru
Contact: Dr Marina Dorofeeva.

SCOTLAND

Epilepsy Scotland
48 Govan Road, Glasgow G51 1JL,
Scotland.
T: +44 14142 74911
E: LYoung@epilepsyscotland.org.uk
Contact: Mrs Lesslie Young.

Associate Members:

Epilepsy Connections

100 Wellington Street,
Glasgow G2 6DH,
Scotland.
T: +44 141 248 4125
E: smaxwell@epilepsyconnections.org.uk

Contact: Ms Shirley Maxwell.
www.epilepsyconnections.org.uk

Scottish Epilepsy Centre,

Quarriers, Quarriers Village,
Bridge of Weir, PA11 3SX,
Scotland.
T: +44 1505 616 045
gerard.gahagan@quarriers.org.uk
Contact: Gerard Gahagan

SERBIA

Serbian Society for Epilepsy

Dunavski kej 7/11,
11000 Beograd,
Serbia.
T: +381 638 668 188
E: mpopovic@yubc.net
Contact: Dr Maria Popovic.

Associate Member:

Epilepsy Association Doctors for Support - Serbia

Bulevar Zorana Ainaica 140,
11070 New Belgrade,
381 Serbia.
T: + 381 11 2606676
E: info@epilepsijagrupa.org.rs
Contact: Dr Biljana Kohen

SLOVAKIA

AURA

Zdruzenie obcanov Slovenska
postihnutych epilepsiou,
Po Box 116, Dubravska cesta 1,
840 05 Bratislava 45,
Slovakia.
T: +421 907531 908
E: zospe.aura@gmail.com
Contact: Dr Jozef Vrátil.

SLOVENIA

Slovenian League against Epilepsy

Ulica stare pravde 2,
SL 1000, Ljubljana,
Slovenia.
T: +386 1432 9393
E: epilepsija@epilepsija.org
Contact: Mrs Svetlana Simic
Klobucaric.

SPAIN

Asociación Española de Epilepsia

dels Madrazo 33-37.4.3, 08006
Barcelona, Spain
T: +34 934 157 577
E: 6764art@comb.es
Contact: Dr Antonio Russi.

SWEDEN

Swedish Epilepsy Association

PO Box 1386, 172 27 Sundbyberg,
Sweden.
T: +46 86694106
E: susanne.lund@epilepsi.se
Contact: Mrs Susanne Lund.

SWITZERLAND

Epi-Suisse

Seefeldstrasse 84,
Postfach 313,
CH-8034 Zurich, Switzerland.
T: +41 4348 86880
E: susann.egli@epi-suisse.ch
Contact: Mrs Susann Egli

Associate Members:

Par Epi

Seefeldstrasse 84,
CH-8008 Zurich,
Switzerland.
T: +41 434 886 560
E: parepi@bluewin.ch
Contact: Susann Egli

Swiss Epilepsy Foundation

Bleulerstrasse 60, CH-8008,
Zurich, Switzerland.
T: +41 44 387 6002
E: pachlatko@swissep.ch
Contact: Dr Christoph Pachlatko.

UK

Epilepsy Action

New Anstey House,
Gate Way Drive, Yeadon,
Leeds LS19 7XY,
UK.

T: +441 132 108 800

E: plee@epilepsy.org.uk.

Contact: Mr Philip Lee.

http://www.epilepsy.org.uk/

http://kids.epilepsy.org.uk/

http://youngpeople.epilepsy.org.uk/

Associate Members:

Gravesend Epilepsy Network

13 St George's Crescent,
Gravesend DA12 4AR,
UK.
T/F: +44 1474 351 673
E: gravesendepilepsy@supanet.com
Contact: Mr Fred Savill.
www.gravesendepilepsynetwork.com

Epilepsy Society

Chesham Lane,
Chalfont St Peter,
Buckinghamshire SL9 0RJ,
UK.
T: +44 1494 601300
E: graham.faulkner@epilepsysociety.org.uk
Contact: Graham Faulkner
www.epilepsysociety.org.uk

LATIN AMERICA

ARGENTINA

ALCE

Tucumán 3261, 1189, Buenos
Aires, Argentina.
T/F: +54 114 8620 440
E: asoalce@aol.com,
Contact: Mr Gonzalez Gartland.

Associate Member:

FUNDEPI

Rocamora 4122, Ciudad de Buenos
Aires CP 1184, Argentina.
T: +54 1141 270 233
E: ramosmejia.epilepsia@gmail.com
Contact: Dr Silvia Kochen.

BRAZIL

Associação Brasileira de Epilepsia

Rua Botacatu 740, CEP 04023-900,
Vila Clementino, São Paulo, Brazil.
T: +55 11 5549-3819
E: abe@epilepsiaibrazil.org.br
Contact: Luis Ferreira Caboclo.

CHILE

Asociación Nacional de Ligas Chilenas contra la Epilepsia, ANLICHE

Patriotas Uruguayos 2236, Codigo
Postal: 8340594, Santiago de
Chile, Chile
T: +56 2 699 2288
anliche@ligaepilepsia.cl
Contact: Mr. Guillermo Silva.
Website: www.ligaepilepsia.cl

COLOMBIA

Fundación Instituto de Rehabilitación para Personas con Epilepsia - FIRE

Barrio Ternera, Calle 1a.,
Calle del Eden,
Cartagena,
Colombia.
T: +57 56618 127
E: fandinojaime@gmail.com
Contact: Dr J Fandiño-Franky.

CUBA

Capitulo Cubano de la IBE

66 Street, Number 2715,
Entre 27 y 29 San Antonio de los
Baños Atemisa,
CP 32500,
Cuba.
E: fabelo@infomed.sld.cu
Contact: Dr Justo Reinaldo Fabelo
Roche, PhD

DOMINICAN REPUBLIC

Sociedad Dominicana Unidos Por la Epilepsia (SODOUE)

Calle Dr. Cesar Dargam No. 10,
Suite 504, 5to Piso,
La Esperilla, Santo Domingo,
Distrito Nacional,
Republica Dominicana.
T: +1 809 476 7206
E: frmontero@yahoo.com
Contact: Dr Franklin Montero.

ECUADOR

Centro Nacional de Epilepsia, APNE

Berrutieta Oe9-180 y Pasaje Acevedo,
Quito, Ecuador.
T: +59 3290 5405
E: cnepilepsia@andinanet.net
Contact: Dr Galo Pesantéz.
www.centronacionaldepilepsia.com

GUATEMALA

IBE Guatemalan Chapter

6a Calle 2-48, Zona 1,
Guatemala City, Guatemala.
T: + 50 222 382 107
E: henrystokes@neurologiaparatos.com
Contact: Dr Henry Stokes.

HONDURAS

Fundación Hondureña de Epilepsia

Col Universidad Norte, Francisco
Morazán, Honduras.
T: +504 2232 2074
E: fundahep@yahoo.com
Contact: Mr Eduardo Rodas

MEXICO

Group "Acceptation" of Persons with Epilepsy - GADEP

San Francisco 1384, 7º Piso B,
Col. Del Valle, Mexico DF. 03100.
T: +525 5520 03474
E: lilianuor@yahoo.com
Contact: Dr Lilia Nuñez Orozco.

PERU

Peruvian Association of Epilepsy

Los Nandues 160-401,
Surquillo, Lima, Peru.
T: +5 114 420 961
E: Ejjjperu@hotmail.com
Contact: Dr Julio Espinoza.

URUGUAY

Asociación Uruguaya contra la Epilepsia

8 de Octubre 2610,
Montevideo CP 11 600,
Uruguay.
E: abogacz@hotmail.com
Contact: Dr Alicia Bogacz.

VENEZUELA

Venezuelan National Bureau

Quebrada Honda a Santa Rosa,
Edif. Tachira PB Local 3,
Al lado de la Sinagoga Mariperez,
Caracas 1050,
Venezuela.
T: +582 125 782 737
E: livece@lycos.com or adri-
analoscher@yahoo.com
Contact: Mrs Adriana Loscher.

NORTH AMERICA

CANADA

Canadian Epilepsy Alliance/Alliance Canadienne de l'Epilepsie
690 Hale Street,
London, Ontario,
Canada N5W 1H4.
T: +1 519 433 4073
E: ed@epilepsysupport.ca
Contact: Mrs Mary Secco.

JAMAICA

Jamaican Epilepsy Association
Andrew Memorial Hospital,
27 Hope Road,
Kingston 10, Jamaica, WI.
T: +876 9688 274
E: jaepilepsy@cwjamaica.com
Contact: Ms Jennifer McCallum.

USA

Epilepsy Foundation
8301 Professional Place,
Landover, MD 20785-2238,
USA.
T: +1 301 918 3756
E: lgibson@efa.org
Contact: Lisa Gibson
www.epilepsyfoundation.org

Associate Members:

Epilepsy Foundation of New Jersey
1 AAA Drive Suite 203, Trenton,
NJ 08691, USA
T: +1 6090 392 4900,
E: ejoyce@familyresourcenetwork.org
Contact: Mr Eric Joice.

LGS Foundation (Lennox-Gastaut Syndrome)

192 Lexington Ave, Suite 216,
New York,
NY 10016, USA.
T: +1 381 11 2606676
E: Christina@lgsfoundation.org
Contact: Mrs Christina SanInocencio.

The Anita Kaufmann Foundation

PO Box 11, New Milford,
New Jersey 07646,
USA.
T: +1 201 655 0420
E: debra@akfus.org
Contact: Mrs Debra Josephs.

SOUTH EAST ASIA

BANGLADESH

Bangladesh Epilepsy Association
3/1 Lake Circus,
Kalabagan Dhaka 1205,
Bangladesh.
T: +88 028 114 846
E: epilepsy_bd@yahoo.com
Contact: Dr MA Mannan.

HONG KONG

The Hong Kong Epilepsy Association
G/F, Wang Lai House,
Wang Tau Hom Estate,
Wong Tai Sin,
Kowloon,
Hong Kong
T: +852 9511 0119,
hkea.hkepilepsy@gmail.com
Contact: Mr Ted Chiu.

Associate Member:

Enlighten Hong Kong Ltd
12/Floor, Kuo Hwa Building,
Nos. 340-342 Hennessy Road,
Wanchai,
Hong Kong.
T: +852 2820 0111
E: admin@enlightenhk.org or
c.shlesinger@enlightenhk.org
Contact: Claudia Schlesinger

INDIA

Indian Epilepsy Association
#502, Academic Block, Dept of
Neurology,
GB Pant Hospital,
New Delhi-110002, India.
T: + 911 123 232 742
E: ieaindia@gmail.com
Contact: Dr. M.M Mehndiratta.

INDONESIA

PERPEI
Sanglah Hospital, Neurology
Department,
Jl. Kesehatan No.1,
Denpasar 80224,
Bali, Indonesia.
T: +62 361 246 082
E: perpeipusat@perpei.com
Contact: Dr Anna Sinaraja.

Associate Member:

Yayasan Epilepsi Indonesia
Jl. Hang Jebat II/2,
Kebayoran Baru,
Jakarta Selatan 12120
Indonesia.
T: +62 021 7254357
E: aska.primardi@ina-epsy.org
Contact: Dr Aska Primardi.

NEPAL

Nepal Epilepsy Association
Post Box 8975, EPC 7070,
Kathmandu, Nepal.
T/F: +977 1441 2945
E: nepeas@yahoo.com
Contact: : Mr Kabindra Pradhan
www.nepilepsy.org.np

SRI LANKA

Epilepsy Association of Sri Lanka
119/1 Kynsey Road,
Colombo 08, Sri Lanka.
Contact: Ms M Samarawickrama.

THAILAND

Epilepsy Association of Thailand
74/29 Ramintra Soi 8,
Ramintra Road, Bangkok
Bangkok 10220, Thailand.
T: +66 81 6555358
E: arayacharuvanij@yahoo.com
Contact: Dr Araya Charuvanij.

WESERN PACIFIC

AUSTRALIA

Joint Epilepsy Council of Australia Ltd (JECA)
PO Box 1049,
Baulkham Hills NSW 1755,
Australia.
T: +61 296 749 966
E: dchapman@jeca.org.au
Contact: Mrs Denise Chapman.

Associate Members:

Epilepsy Association of South Australia and the Northern Territory Inc.
PO Box 12,
Woodville,
South Australia 5011, Australia.
T: +61 884 485 600
E: rcole@epilepsycentre.org.au
Contact: Mr Robert Cole.
www.epilepsycentre.org.au

Epilepsy Action, Australia

Suite 8, 44-46 Oxford Street,
Epping NSW 2121, Australia.
T: 1300 37 45 37
E: epilepsy@epilepsy.org.au
Contact: Ms Jodie Trowell.
www.epilepsy.org.au

Epilepsy Australia

PO Box 1049, Baulkham Hills,
NSW 1755, Australia.
T: + 61 2 9686 8162
E: dchapman@epilepsyaustralia.net
Contact: Mrs Denise Chapman

Epilepsy Queensland

PO Box 1457, Coorparoo BC
4151, Queensland, Australia.
T: +617 3435 5000,
E: epilepsy@epilepsyqueensland.com.au
Contact: Ms Helen Whitehead.

Epilepsy Association ACT Inc.

27 Mulley Street,
Holder ACT 2611,
PO Box 3744,
Weston ACT 261,
Australia.
T: +61 2 6287 4555
E: epilepsy@epilepsyact.org.au
Contact: Ms Jacinta Cummins

CHINA:

China Assoc Against Epilepsy
Rm. 5101, Bldg 2,
Beijing Exhibition Center Hotel,
135 Xi Zhi Men Wai Avenue,
Beijing 100044,
PR China.
T: +861 065 250 423
E: caae2008@sina.com.cn or
ceea2008@sina.com
Contact: Dr Shichuo Li.

JAPAN

Japanese Epilepsy Association Inc.,
4F Zenkokuzaidan Building,
2-2-8 Nishiwaseda Shinjuku-ku,
Tokyo 162-0051,
Japan.
T: +81 3320 25661
E: nami@scan-net.ne.jp
Contact: Yuji Tadokoro
http://www.jea-net.jp/

Associate Member:

Epilepsy Hospital Bethel
27-4 Hata-Mukaiyama-Minami,
Kitahase,
Iwanuma City 989-2455,
Japan.
T: +81 2232 41211
E: betheljp@topaz.ocn.ne.jp,
Contact: Dr Takashi Soga.

KOREA

Korean Epilepsy Association
Department of Neurology,
Ajou University Hospital,
San-5 Woncun-dong,
Suwon 443-721, South Korea.
T: +82 1090 967 911
E: khuh@ajou.ac.kr
Contact: Dr Kyoony Huh.

MALAYSIA

Malaysia Society of Epilepsy
Jabatan Neurologi,
Kuala Lumpur Hospital,
505086 Jalan Pahang,
Kuala Lumpur, Malaysia.
T: +603 2615 5405,
E: drhussain@hkl.gov.my
Contact: Magrette Selvy Anthony

MONGOLIA

Mongolian Epilepsy Association
HSUM
PO Box 48/28, Ulaanbataar,
Mongolia.
T: +976 9917 7153,
E: tovuudorj@yahoo.com,
Contact: Dr A Tovuudorj.

NEW ZEALAND

Epilepsy New Zealand (ENZ)
PO Box 1074,
Waikato Mail Centre,
Hamilton 3240,
New Zealand.
T: +64 78 343 446
E: ceo.nsc@epilepsy.org.nz
Contact: Mr Frank Gouveia.
www.epilepsy.org.nz

PHILIPPINES

Epilepsy Awareness & Advocacy Inc.
151-B Scout Rallos Extension,
Sacred Heart, Kamuning,
Quezon City, 1103,
Philippines.
T: +632 414 4638
E: ph.eaai@yahoo.com
Contact: Mrs J Desirée Khonghun.

SINGAPORE

Singapore Epilepsy Foundation
149 Rocher Road,
#04-06 Fu Lu Shou Complex,
188425, Singapore.
T: +65 3344 302
E: admin@epilepsy.com.sg
Contact: Ms Grace Tan.

Associate Member:

Epilepsy Care Group (Singapore)
No 26 Dunearn Road (Level 2),
Singapore 309423.
T: +65 6358 0566
E: ecgs93@singnet.com.sg
Contact: Mr Sherman Goh.
www.epilepsycare.org

TAIWAN

Taiwan Epilepsy Association
B1F, #41, Alley 66, Lane 155,
Tun-Hwa N. Road,
Taipei 105,
Taiwan.
T: +886 2251 49682
E: didikun@gmail.com
Contact: Dr Yuan-Fu Tseng.

Congresses 2013

2013 MONTREAL

23rd - 27th JUNE, 2013

30th INTERNATIONAL EPILEPSY CONGRESS



INTERNATIONAL
LEAGUE
AGAINST
EPILEPSY

28th - 30th August 2013



13th EUROPEAN CONFERENCE ON

Epilepsy & Society

LJUBLJANA, SLOVENIA



International Bureau for Epilepsy
11 Priory Hall Stillorgan Road
Blackrock Co. Dublin
Ireland
T: ++353 1 2108850
F: ++353 1 2108450
E: ibedublin@eircom.net
www.ibe-epilepsy.org

